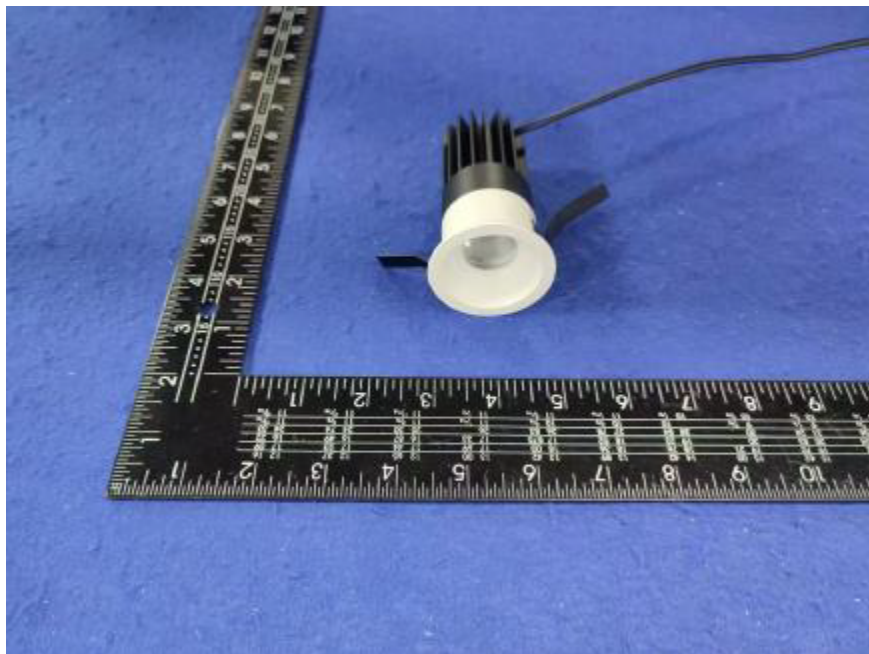


Photometric Report for each Light Engine used in double configuration



Light Output Ratio:	72.8%	
Luminaire Power:	8.83 W	
SHR Nominal:	0.00	Calculated using the TM5
SHR Maximum:	0.30	fine grid method.

C Range: 0 - 360DEG  
C Interval: For a lens beam angle of 15°  
Test Speed: HIGH  
Temperature: 77.54°F  
Operators: zoe  
Test Date: 2024-8-15

γ Range: 0 - 180DEG  
γ Interval: 1.0DEG  
Test System: EVERFINE GO-SPEX500\_V1 SYSTEM V2.00.461  
Humidity: 65.0%  
Test Distance: 124.409" [K=1.0000]  
Remarks: LAMP: BXRH-30G10T0-G-83 Ra: 90  
LENS: PM-1084 15R  
NO DRIVER: 500mA  
30minutes warm-up

LUMINOUS INTENSITY DISTRIBUTION DIAGRAM

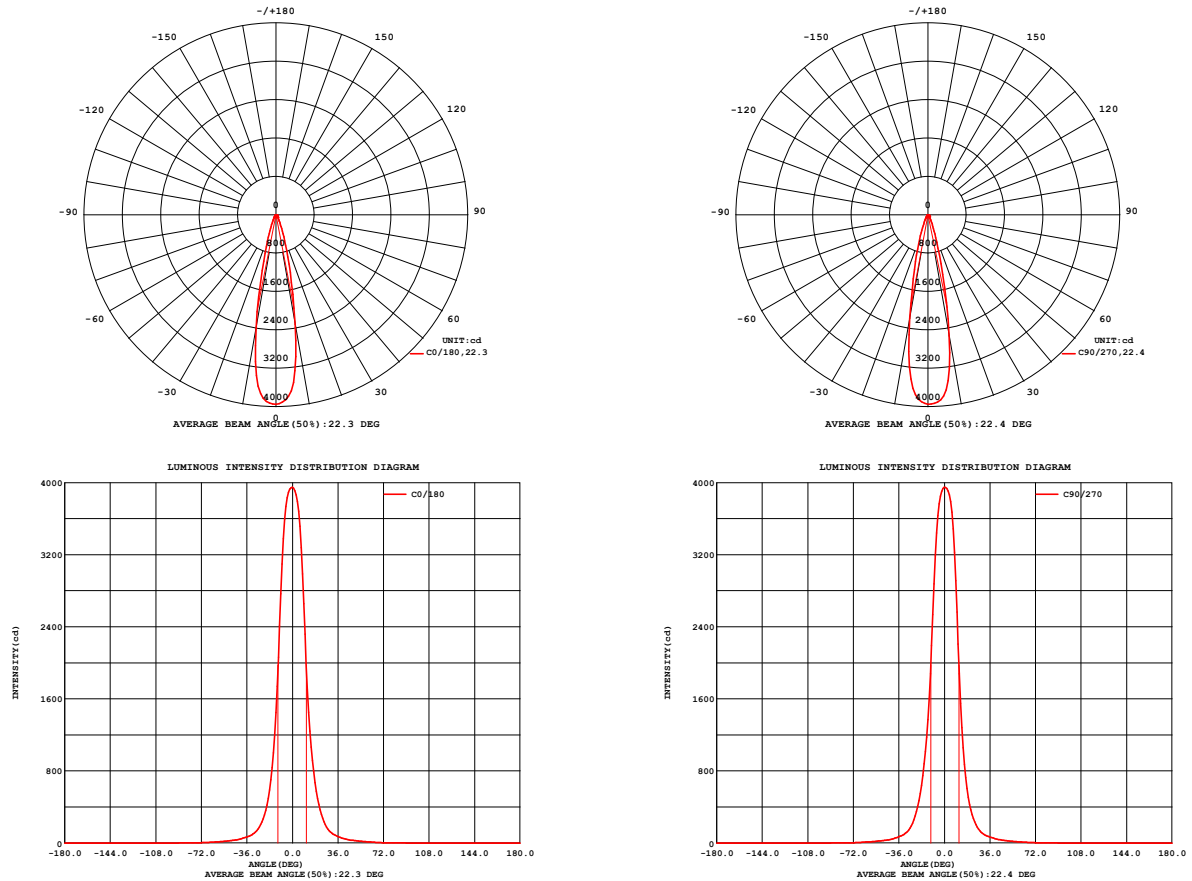


Fig. C0/C180

Fig. C90/C270

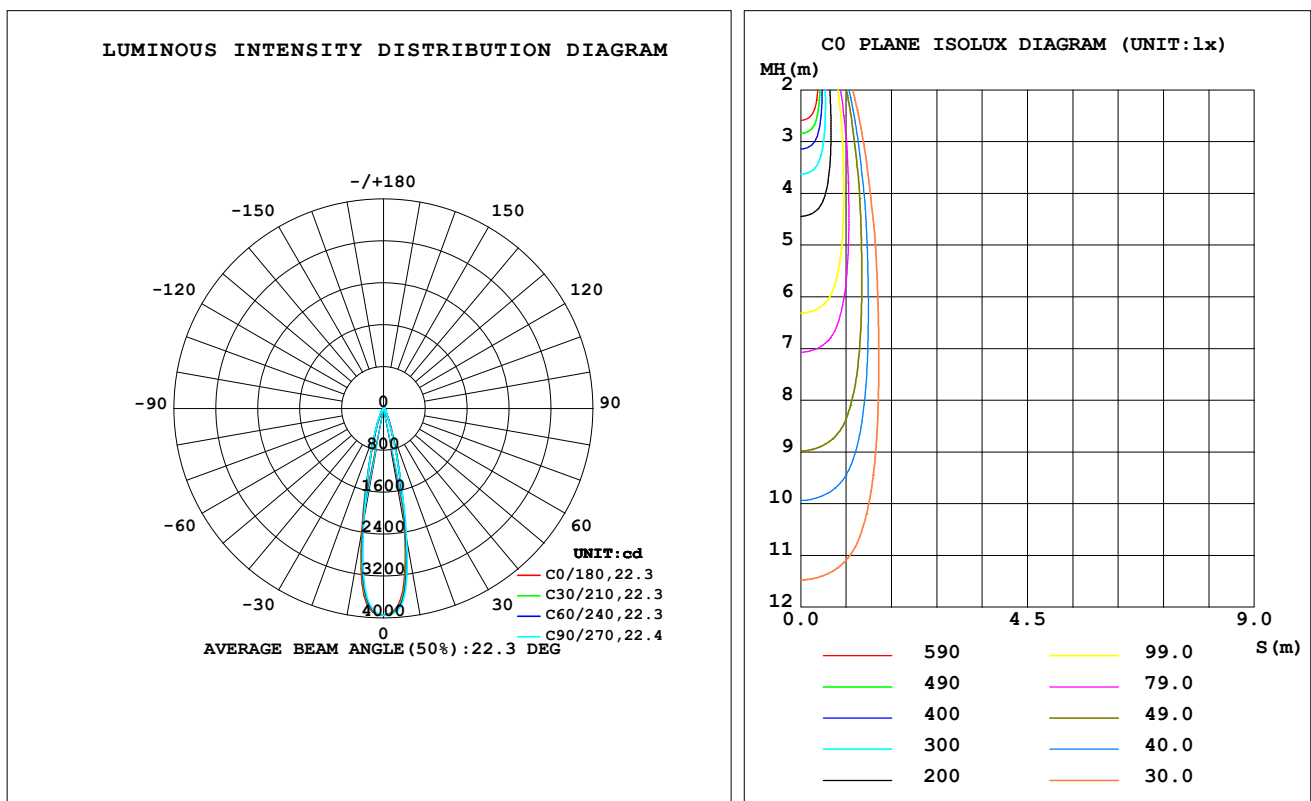
C Range: 0 - 360DEG  
C Interval: For a lens beam angle of 15°  
Test Speed: HIGH  
Temperature: 77.54°F  
Operators: zoe  
Test Date: 2024-8-15

γ Range: 0 - 180DEG  
γ Interval: 1.0DEG  
Test System: EVERFINE GO-SPEX500\_V1 SYSTEM V2.00.461  
Humidity: 65.0%  
Test Distance: 124.409" [K=1.0000]  
Remarks: LAMP: BXRH-30G10T0-G-83 Ra: 90  
LENS: PM-1084 15R  
NO DRIVER: 500mA  
30minutes warm-up

## LUMINAIRE PHOTOMETRIC TEST REPORT

Test:U:17.660V I:0.5000A P:8.8300W PF:1.0000 Freq:49.99Hz Lamp Flux:1124.6x1 lm		
NAME: CTL-M-1.5-30K-15-RC-FX-TF-OP	TYPE:	WEIGHT:
SPEC.: 3000K	DIM.:	SERIAL No.: 2408151135
MFR.: MERCURY LIGHTING	SUR.: 0.001256m2	Shielding Angle:

DATA OF LAMP		PHOTOMETRIC DATA Eff: 92.77 lm/W			
MODEL	Brideglux	I <sub>max</sub> (cd)	3949	S/MH (C0/180)	0.37
NOMINAL POWER (W)	9	LOR (%)	72.8	S/MH (C90/270)	0.37
RATED VOLTAGE (V)	18	TOTAL FLUX (lm)	819.20	η UP, DN (C0-180)	0.0, 36.9
NOMINAL FLUX (lm)	1124.6	CIE CLASS	DIRECT	η UP, DN (C180-360)	0.0, 35.9
LAMPS INSIDE	1	η up (%)	0.0	CIBSE SHR NOM	0.00
TEST VOLTAGE (V)	18	η down (%)	72.8	CIBSE SHR MAX	0.30



C Range: 0 - 360DEG

C Interval: For a lens beam angle of 15°

Test Speed: HIGH

Temperature: 77.54 °F

Operators: zoe

Test Date: 2024-8-15

γ Range: 0 - 180DEG

γ Interval: 1.0DEG

Test System: EVERFINE GO-SPEX500\_V1 SYSTEM V2.00.461

Humidity: 65.0%

Test Distance: 124.409" [K=1.0000]

Remarks: LAMP: BXRH-30G10T0-G-83 Ra: 90

LENS: PM-1084 15R

NO DRIVER: 500mA

30minutes warm-up

## ZONAL FLUX DIAGRAM

### ZONAL FLUX DIAGRAM:

$\gamma$	C0	C45	C90	C135	C180	C225	C270	C315	$\gamma$	$\Phi$ zone	$\Phi$ total	%lum,lamp
10	2318	2452	2564	2540	2410	2265	2191	2237	0- 10	311.3	311.3	38,27.7
20	493.3	462.4	429.5	410.6	421.4	440.1	470.9	493.5	10- 20	302.1	613.4	74.9,54.5
30	124.3	114.6	108.9	109.0	109.8	109.8	114.7	122.7	20- 30	105.4	718.8	87.7,63.9
40	51.63	50.72	49.56	49.06	49.44	49.67	49.67	50.85	30- 40	47.48	766.2	93.5,68.1
50	25.26	24.87	24.15	23.71	24.10	24.69	24.77	24.91	40- 50	26.66	792.9	96.8,70.5
60	12.41	12.01	11.75	11.50	11.52	12.02	12.38	12.50	50- 60	15.69	808.6	98.7,71.9
70	3.676	3.826	3.974	3.983	3.897	3.744	3.630	3.605	60- 70	7.333	815.9	99.6,72.6
80	1.346	1.397	1.459	1.439	1.404	1.347	1.321	1.310	70- 80	2.613	818.5	99.9,72.8
90	0	0	0	0	0	0	0	0	80- 90	0.6635	819.2	100,72.8
100	0	0	0	0	0	0	0	0	90-100	0	819.2	100,72.8
110	0	0	0	0	0	0	0	0	100-110	0	819.2	100,72.8
120	0	0	0	0	0	0	0	0	110-120	0	819.2	100,72.8
130	0	0	0	0	0	0	0	0	120-130	0	819.2	100,72.8
140	0	0	0	0	0	0	0	0	130-140	0	819.2	100,72.8
150	0	0	0	0	0	0	0	0	140-150	0	819.2	100,72.8
160	0	0	0	0	0	0	0	0	150-160	0	819.2	100,72.8
170	0	0	0	0	0	0	0	0	160-170	0	819.2	100,72.8
180	0	0	0	0	0	0	0	0	170-180	0	819.2	100,72.8
DEG	LUMINOUS INTENSITY:cd									UNIT:lm		

C Range: 0 - 360DEG

C Interval: For a lens beam angle of 15°

Test Speed: HIGH

Temperature:77.54°F

Operators:zoe

Test Date:2024-8-15

 $\gamma$  Range: 0 - 180DEG

 $\gamma$  Interval: 1.0DEG

Test System:EVERFINE GO-SPEX500\_V1 SYSTEM V2.00.461

Humidity:65.0%

Test Distance:124.409" [K=1.0000]

Remarks: LAMP:BXRH-30G10T0-G-83 Ra:90

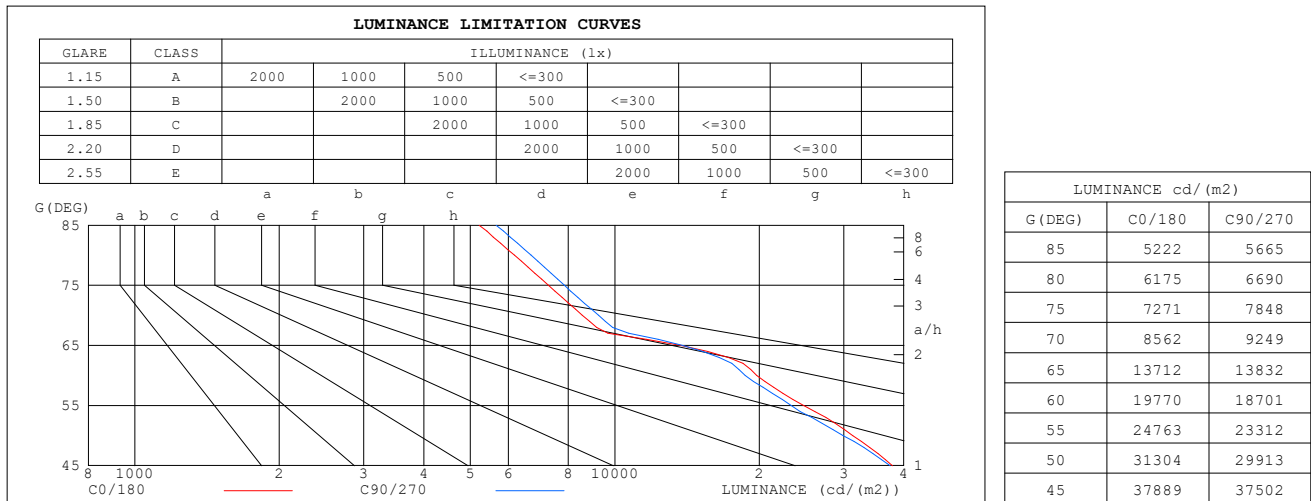
LENS:PM-1084 15R

NO DRIVER:500mA

30minutes warm-up

## LUMINANCE LIMITATION CURVES

Test:U:17.660V I:0.5000A P:8.8300W PF:1.0000 Freq:49.99Hz Lamp Flux:1124.6x1 lm		
NAME: CTL-M-1.5-30K-15-RC-FX-TF-OP	TYPE:	WEIGHT:
SPEC.: 3000K	DIM.:	SERIAL No.: 2408151135
MFR.: MERCURY LIGHTING	SUR.: 0.001256m2	Shielding Angle:



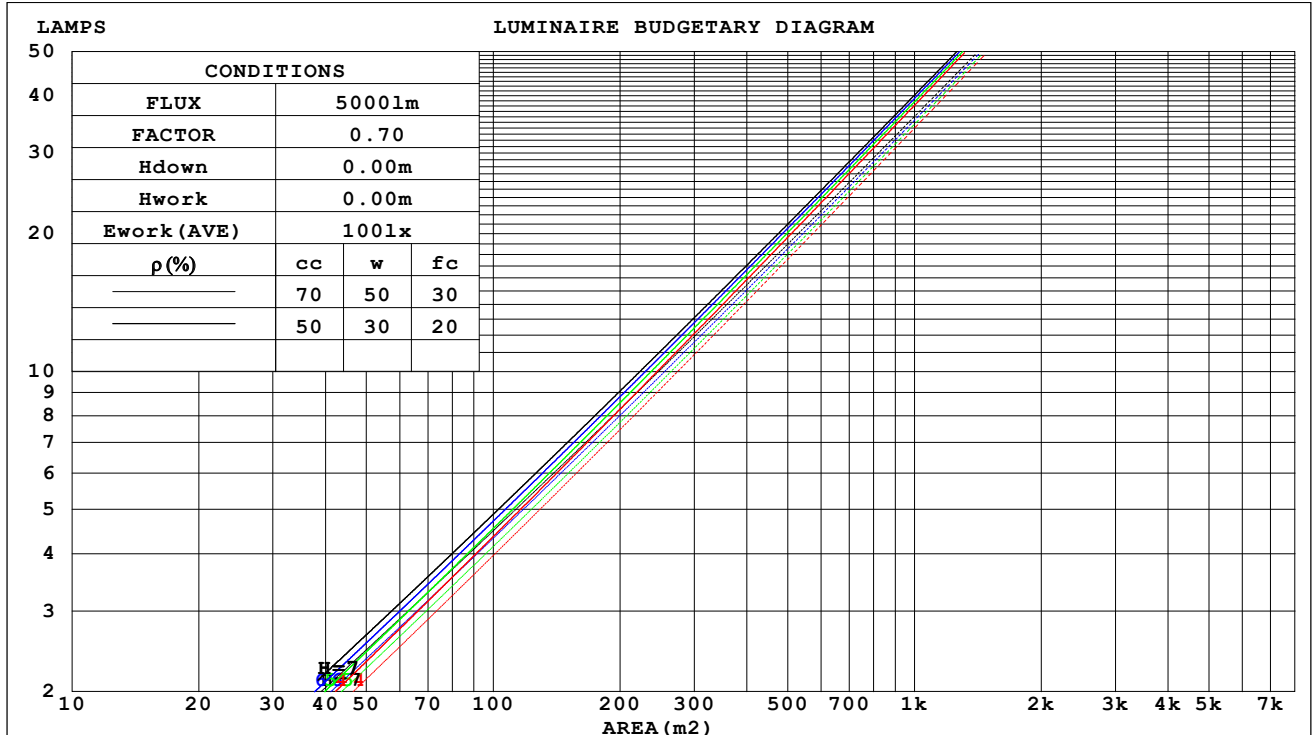
C Range: 0 - 360DEG  
 C Interval: For a lens beam angle of 15°  
 Test Speed: HIGH  
 Temperature: 77.54°F  
 Operators: zoe  
 Test Date: 2024-8-15

γ Range: 0 - 180DEG  
 γ Interval: 1.0DEG  
 Test System: EVERFINE GO-SPEX500\_V1 SYSTEM V2.00.461  
 Humidity: 65.0%  
 Test Distance: 124.409" [K=1.0000]  
 Remarks: LAMP: BXRH-30G10T0-G-83 Ra:90  
 LENS: PM-1084 15R  
 NO DRIVER: 500mA  
 30minutes warm-up

## CU AND LUMINAIRE BUDGETARY ESTIMATE DIAGRAM

Test:U:17.660V I:0.5000A P:8.8300W PF:1.0000 Freq:49.99Hz Lamp Flux:1124.6x1 lm		
NAME: CTL-M-1.5-30K-15-RC-FX-TF-OP	TYPE:	WEIGHT:
SPEC.: 3000K	DIM.:	SERIAL No.: 2408151135
MFR.: MERCURY LIGHTING	SUR.: 0.001256m2	Shielding Angle:

pcc	80%			70%			50%			30%			10%			0
pw	50%	30%	10%	50%	30%	10%	50%	30%	10%	50%	30%	10%	50%	30%	10%	0
pfc	20%			20%			20%			20%			20%			0
RCR	RCR:Room Cavity Ratio															



C Range: 0 - 360DEG

C Interval: For a lens beam angle of 15°

Test Speed: HIGH

Temperature: 77.54°F

Operators: zoe

Test Date: 2024-8-15

γ Range: 0 - 180DEG

γ Interval: 1.0DEG

Test System: EVERFINE GO-SPEX500\_V1 SYSTEM V2.00.461

Humidity: 65.0%

Test Distance: 124.409" [K=1.0000]

Remarks: LAMP: BXRH-30G10T0-G-83 Ra: 90

LENS: PM-1084 15R

NO DRIVER: 500mA

30minutes warm-up

## WEC AND CCEC

Test:U:17.660V I:0.5000A P:8.8300W PF:1.0000 Freq:49.99Hz Lamp Flux:1124.6x1 lm		
NAME: CTL-M-1.5-30K-15-RC-FX-TF-OP	TYPE:	WEIGHT:
SPEC.: 3000K	DIM.:	SERIAL No.: 2408151135
MFR.: MERCURY LIGHTING	SUR.: 0.001256m2	Shielding Angle:

pcc	80%			70%			50%			30%			10%			0
pw	50%	30%	10%	50%	30%	10%	50%	30%	10%	50%	30%	10%	50%	30%	10%	0
pfc	20%			20%			20%			20%			20%			0
RCR	RCR:Room Cavity Ratio						Wall Exitance Coefficients(WEC)									
0.0																
1.0	.107	.061	.019	.102	.058	.018	.093	.053	.017	.084	.049	.016	.077	.044	.014	
2.0	.099	.055	.017	.095	.053	.016	.088	.049	.015	.081	.045	.014	.075	.042	.013	
3.0	.093	.049	.015	.089	.048	.014	.083	.045	.014	.077	.042	.013	.072	.040	.012	
4.0	.087	.045	.013	.084	.044	.013	.079	.042	.012	.074	.040	.012	.069	.038	.011	
5.0	.082	.042	.012	.079	.041	.012	.075	.039	.011	.070	.037	.011	.066	.036	.011	
6.0	.077	.039	.011	.075	.038	.011	.071	.036	.011	.067	.035	.010	.064	.034	.010	
7.0	.073	.036	.010	.071	.035	.010	.068	.034	.010	.064	.033	.010	.061	.032	.009	
8.0	.069	.034	.009	.068	.033	.009	.065	.032	.009	.062	.031	.009	.059	.030	.009	
9.0	.066	.032	.009	.064	.031	.009	.062	.031	.009	.059	.030	.009	.057	.029	.008	
10.0	.063	.030	.008	.062	.030	.008	.059	.029	.008	.057	.028	.008	.055	.028	.008	

pcc	80%			70%			50%			30%			10%			0
pw	50%	30%	10%	50%	30%	10%	50%	30%	10%	50%	30%	10%	50%	30%	10%	0
pfc	20%			20%			20%			20%			20%			0
RCR	RCR:Room Cavity Ratio						Ceiling Cavity Exitance Coefficients(CCEC)									
0.0	.139	.139	.139	.119	.119	.119	.081	.081	.081	.046	.046	.046	.015	.015	.015	
1.0	.123	.115	.107	.105	.099	.092	.072	.068	.064	.041	.039	.037	.013	.013	.012	
2.0	.110	.097	.085	.095	.083	.074	.065	.058	.051	.037	.033	.030	.012	.011	.010	
3.0	.100	.083	.069	.086	.071	.060	.059	.049	.042	.034	.029	.025	.011	.009	.008	
4.0	.091	.071	.057	.078	.062	.049	.054	.043	.035	.031	.025	.020	.010	.008	.007	
5.0	.083	.063	.047	.072	.054	.041	.049	.038	.029	.029	.022	.017	.009	.007	.006	
6.0	.077	.055	.040	.066	.048	.035	.046	.034	.025	.026	.020	.015	.009	.006	.005	
7.0	.071	.049	.034	.061	.043	.030	.042	.030	.021	.025	.018	.013	.008	.006	.004	
8.0	.067	.045	.029	.057	.039	.026	.040	.027	.018	.023	.016	.011	.007	.005	.004	
9.0	.062	.040	.026	.054	.035	.022	.037	.025	.016	.022	.015	.009	.007	.005	.003	
10.0	.059	.037	.022	.051	.032	.020	.035	.023	.014	.021	.013	.008	.007	.004	.003	

C Range: 0 - 360DEG

C Interval: For a lens beam angle of 15°

Test Speed: HIGH

Temperature: 77.54 °F

Operators: zoe

Test Date: 2024-8-15

γ Range: 0 - 180DEG

γ Interval: 1.0DEG

Test System: EVERFINE GO-SPEX500\_V1 SYSTEM V2.00.461

Humidity: 65.0%

Test Distance: 124.409" [K=1.0000]

Remarks: LAMP: BXRH-30G10T0-G-83 Ra: 90

LENS: PM-1084 15R

NO DRIVER: 500mA

30minutes warm-up

UGR(Unified Glare Rating) Table

Test:U:17.660V I:0.5000A P:8.8300W PF:1.0000 Freq:49.99Hz Lamp Flux:1124.6x1 lm											
NAME: CTL-M-1.5-30K-15-RC-FX-TF-OP					TYPE:			WEIGHT:			
SPEC.: 3000K					DIM.:			SERIAL No.: 2408151135			
MFR.: MERCURY LIGHTING					SUR.: 0.001256m2			Shielding Angle:			
ceiling/cavity	0.7	0.7	0.5	0.5	0.3	0.7	0.7	0.5	0.5	0.3	
walls	0.5	0.3	0.5	0.3	0.3	0.5	0.3	0.5	0.3	0.3	
working plane	0.2	0.2	0.2	0.2	0.2	0.2	0.2	0.2	0.2	0.2	
Room dimensions		Viewed crosswise					Viewed endwise				
x = 2H y = 2H	2H	17.6	18.3	17.8	18.5	18.6	17.3	18.0	17.6	18.2	18.3
	3H	17.8	18.4	18.0	18.6	18.8	17.6	18.2	17.8	18.4	18.6
	4H	17.8	18.4	18.1	18.6	18.8	17.6	18.2	17.9	18.4	18.6
	6H	17.8	18.4	18.1	18.6	18.9	17.6	18.2	17.9	18.4	18.7
	8H	17.8	18.4	18.1	18.6	18.9	17.6	18.2	17.9	18.4	18.7
	12H	17.8	18.3	18.1	18.6	18.8	17.6	18.1	17.9	18.4	18.7
4H	2H	17.7	18.3	18.0	18.6	18.8	17.5	18.1	17.7	18.3	18.5
	3H	17.9	18.5	18.2	18.7	19.0	17.7	18.3	18.0	18.5	18.8
	4H	18.0	18.5	18.3	18.8	19.1	17.8	18.3	18.2	18.6	18.9
	6H	18.0	18.5	18.4	18.8	19.1	17.9	18.3	18.3	18.7	19.0
	8H	18.0	18.4	18.4	18.8	19.1	17.9	18.3	18.3	18.7	19.0
	12H	18.0	18.4	18.4	18.8	19.1	17.9	18.3	18.3	18.6	19.0
8H	4H	17.9	18.3	18.3	18.7	19.1	17.8	18.2	18.2	18.5	18.9
	6H	18.0	18.3	18.4	18.7	19.1	17.9	18.2	18.3	18.6	19.0
	8H	18.0	18.3	18.5	18.7	19.2	17.9	18.2	18.3	18.6	19.1
	12H	18.0	18.3	18.5	18.7	19.2	17.9	18.2	18.4	18.6	19.1
12H	4H	17.9	18.3	18.3	18.6	19.0	17.7	18.1	18.1	18.5	18.9
	6H	18.0	18.3	18.4	18.7	19.1	17.8	18.1	18.3	18.6	19.0
	8H	18.0	18.3	18.5	18.7	19.2	17.9	18.1	18.3	18.6	19.0
Variations with the observer position at spacings(CIE Pub.117):											
S = 1.0H	+ 1.1 / - 1.6					+ 1.1 / - 1.5					
1.5H	+ 1.6 / - 0.9					+ 1.3 / - 0.8					
2.0H	+ 1.7 / - 1.5					+ 1.7 / - 1.4					

CIE Pub.117, 1125 lm Total Lamp Luminous Flux Correct (8log(F/F0) = 0.4)  
 Area: 0.001256 m2

C Range: 0 - 360DEG

C Interval: For a lens beam angle of 15°

Test Speed: HIGH

Temperature: 77.54°F

Operators: zoe

Test Date: 2024-8-15

γ Range: 0 - 180DEG

γ Interval: 1.0DEG

Test System: EVERFINE GO-SPEX500\_V1 SYSTEM V2.00.461

Humidity: 65.0%

Test Distance: 124.409" [K=1.0000]

Remarks: LAMP: BXRH-30G10T0-G-83 Ra: 90

LENS: PM-1084 15R

NO DRIVER: 500mA

30minutes warm-up

## UTILIZATION FACTORS TABLE

Test:U:17.660V I:0.5000A P:8.8300W PF:1.0000 Freq:49.99Hz Lamp Flux:1124.6x1 lm		
NAME: CTL-M-1.5-30K-15-RC-FX-TF-OP	TYPE:	WEIGHT:
SPEC.: 3000K	DIM.:	SERIAL No.: 2408151135
MFR.: MERCURY LIGHTING	SUR.: 0.001256m2	Shielding Angle:

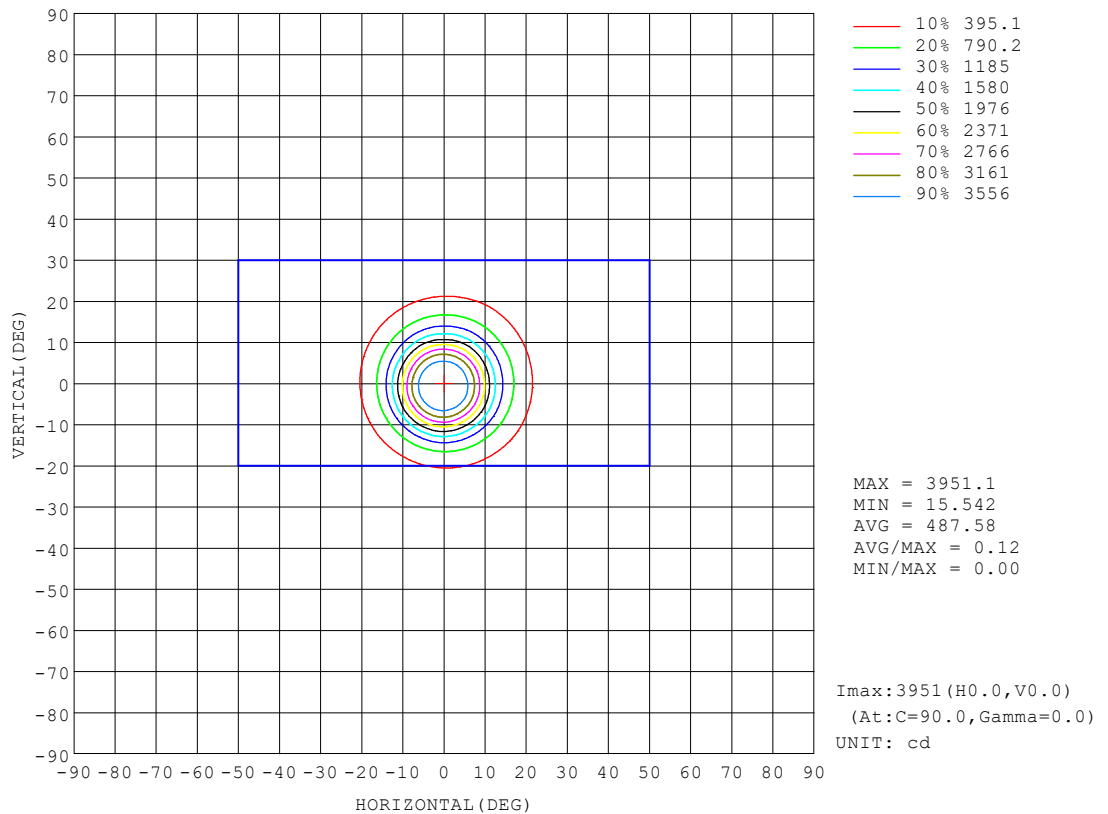
REFLECTANCE										
Ceiling	0.8	0.8	0.8	0.7	0.7	0.7	0.5	0.5	0.5	0
Walls	0.7	0.5	0.3	0.7	0.5	0.3	0.7	0.5	0.3	0
Working plane	0.2	0.2	0.2	0.2	0.2	0.2	0.2	0.2	0.2	0
ROOM INDEX	UTILIZATION FACTORS (PERCENT) $k(RI) \times RCR = 5$									
$k = 0.60$	64	59	56	63	59	56	63	59	56	54
0.80	69	65	62	69	65	62	68	64	62	59
1.00	72	68	66	72	68	65	71	68	65	62
1.25	75	71	69	74	71	69	73	70	68	65
1.50	77	74	71	76	73	71	75	72	70	67
2.00	79	76	74	78	75	73	76	74	72	68
2.50	80	78	75	79	77	75	77	75	73	69
3.00	81	79	77	80	78	76	78	76	75	70
4.00	83	81	79	81	80	78	79	77	76	71
5.00	84	82	81	82	81	80	79	78	77	72
ROOM INDEX	UF (total)									Direct
According to DIN EN 13032-2 2004			Suspended					SHRNOM = 1.25		

C Range: 0 - 360DEG  
 C Interval: For a lens beam angle of 15°  
 Test Speed: HIGH  
 Temperature: 77.54°F  
 Operators: zoe  
 Test Date: 2024-8-15

γ Range: 0 - 180DEG  
 γ Interval: 1.0DEG  
 Test System: EVERFINE GO-SPEX500\_V1 SYSTEM V2.00.461  
 Humidity: 65.0%  
 Test Distance: 124.409" [K=1.0000]  
 Remarks: LAMP: BXRH-30G10T0-G-83 Ra:90  
 LENS: PM-1084 15R  
 NO DRIVER: 500mA  
 30minutes warm-up

## ISOCANDELA DIAGRAM

Test:U:17.660V I:0.5000A P:8.8300W PF:1.0000 Freq:49.99Hz Lamp Flux:1124.6x1 lm		
NAME: CTL-M-1.5-30K-15-RC-FX-TF-OP	TYPE:	WEIGHT:
SPEC.: 3000K	DIM.:	SERIAL No.: 2408151135
MFR.: MERCURY LIGHTING	SUR.: 0.001256m2	Shielding Angle:



C Range: 0 - 360DEG

C Interval: For a lens beam angle of 15°

Test Speed: HIGH

Temperature:77.54°F

Operators:zoe

Test Date:2024-8-15

γ Range: 0 - 180DEG

γ Interval: 1.0DEG

Test System:EVERFINE GO-SPEX500\_V1 SYSTEM V2.00.461

Humidity:65.0%

Test Distance:124.409" [K=1.0000]

Remarks: LAMP:BXRH-30G10T0-G-83 Ra:90

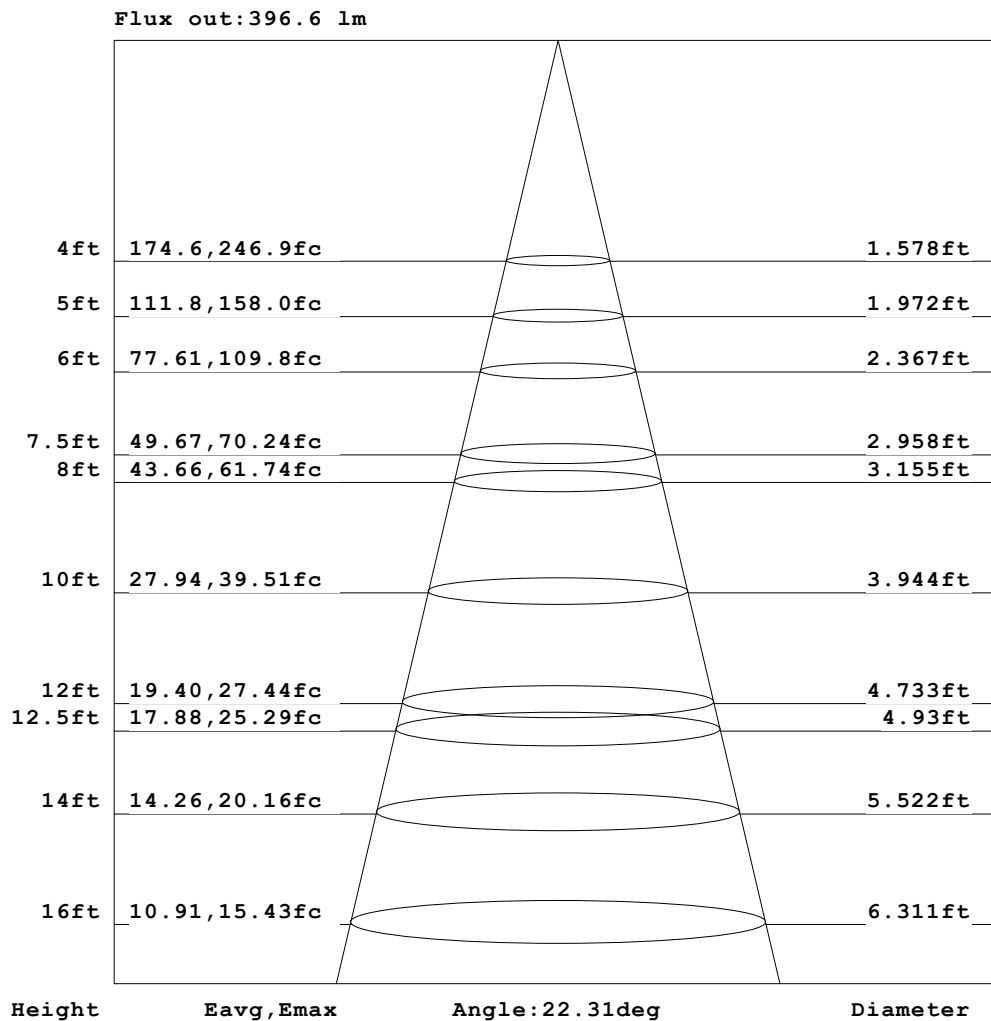
LENS:PM-1084 15R

NO DRIVER:500mA

30minutes warm-up

**AAI Figure**

Test:U:17.660V I:0.5000A P:8.8300W PF:1.0000 Freq:49.99Hz Lamp Flux:1124.6x1 lm		
NAME: CTL-M-1.5-30K-15-RC-FX-TF-OP	TYPE:	WEIGHT:
SPEC.: 3000K	DIM.:	SERIAL No.: 2408151135
MFR.: MERCURY LIGHTING	SUR.: 0.001256m2	Shielding Angle:



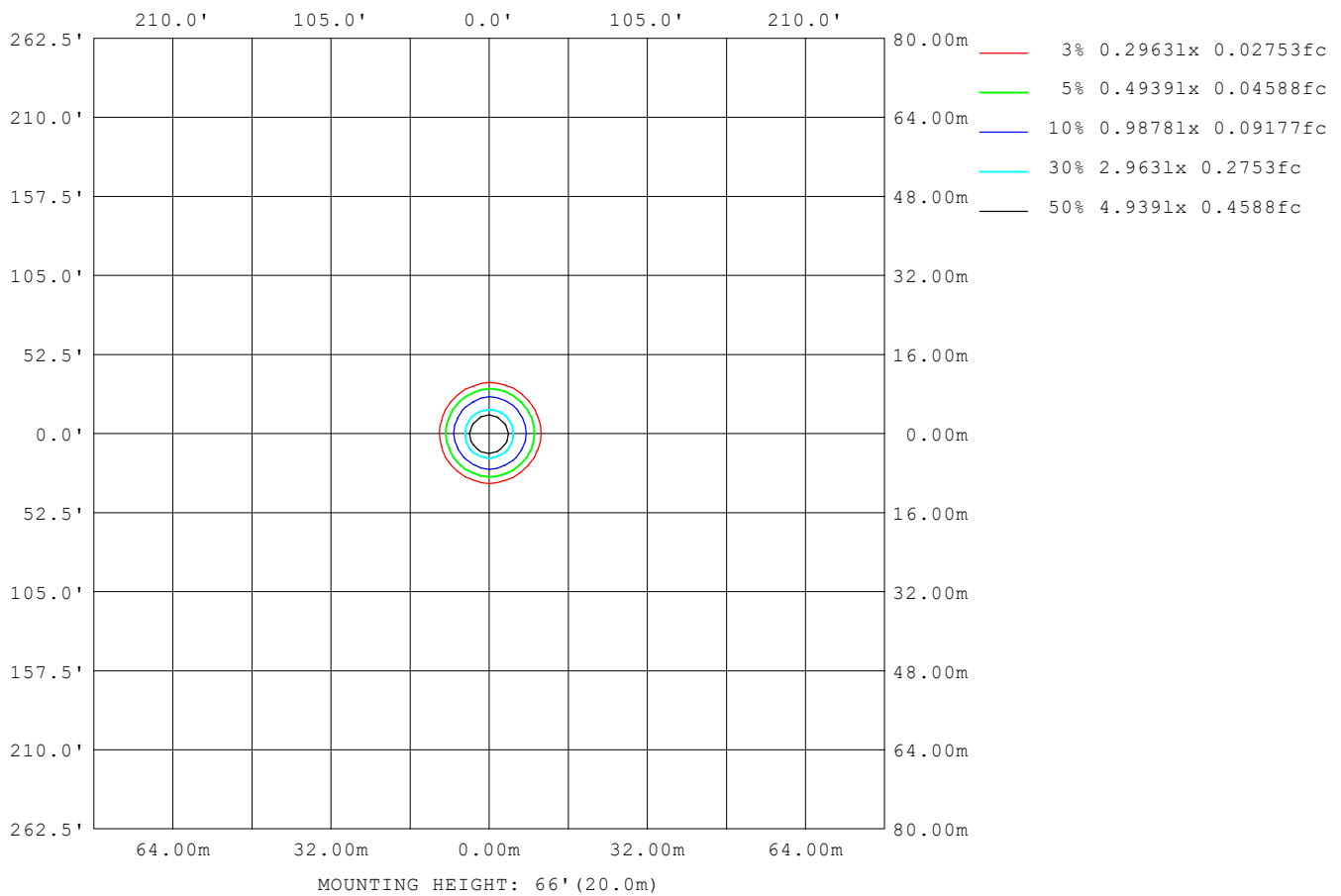
Note: The Curves indicate the illuminated area and the average illumination when the luminaire is at different distance.

C Range: 0 - 360DEG  
 C Interval: For a lens beam angle of 15°  
 Test Speed: HIGH  
 Temperature: 77.54°F  
 Operators: zoe  
 Test Date: 2024-8-15

γ Range: 0 - 180DEG  
 γ Interval: 1.0DEG  
 Test System: EVERFINE GO-SPEX500\_V1 SYSTEM V2.00.461  
 Humidity: 65.0%  
 Test Distance: 124.409" [K=1.0000]  
 Remarks: LAMP: BXRH-30G10T0-G-83 Ra:90  
 LENS: PM-1084 15R  
 NO DRIVER: 500mA  
 30minutes warm-up

**ISOLUX DIAGRAM**

<b>Test:</b> U:17.660V I:0.5000A P:8.8300W PF:1.0000 Freq:49.99Hz <b>Lamp Flux:</b> 1124.6x1 lm		
<b>NAME:</b> CTL-M-1.5-30K-15-RC-FX-TF-OP	<b>TYPE:</b>	<b>WEIGHT:</b>
<b>SPEC.:</b> 3000K	<b>DIM.:</b>	<b>SERIAL No.:</b> 2408151135
<b>MFR.:</b> MERCURY LIGHTING	<b>SUR.:</b> 0.001256m2	<b>Shielding Angle:</b>


**C Range:** 0 - 360DEG

**C Interval:** For a lens beam angle of 15°

**Test Speed:** HIGH

**Temperature:** 77.54°F

**Operators:** zoe

**Test Date:** 2024-8-15

**γ Range:** 0 - 180DEG

**γ Interval:** 1.0DEG

**Test System:** EVERFINE GO-SPEX500\_V1 SYSTEM V2.00.461

**Humidity:** 65.0%

**Test Distance:** 124.409" [K=1.0000]

**Remarks:** LAMP: BXRH-30G10T0-G-83 Ra:90

**LENS:** PM-1084 15R

**NO DRIVER:** 500mA

**30minutes warm-up**

**LED Avg.L Report**

Test:U:17.660V I:0.5000A P:8.8300W PF:1.0000 Freq:49.99Hz Lamp Flux:1124.6x1 lm		
NAME: CTL-M-1.5-30K-15-RC-FX-TF-OP	TYPE:	WEIGHT:
SPEC.: 3000K	DIM.:	SERIAL No.: 2408151135
MFR.: MERCURY LIGHTING	SUR.: 0.001256m2	Shielding Angle:

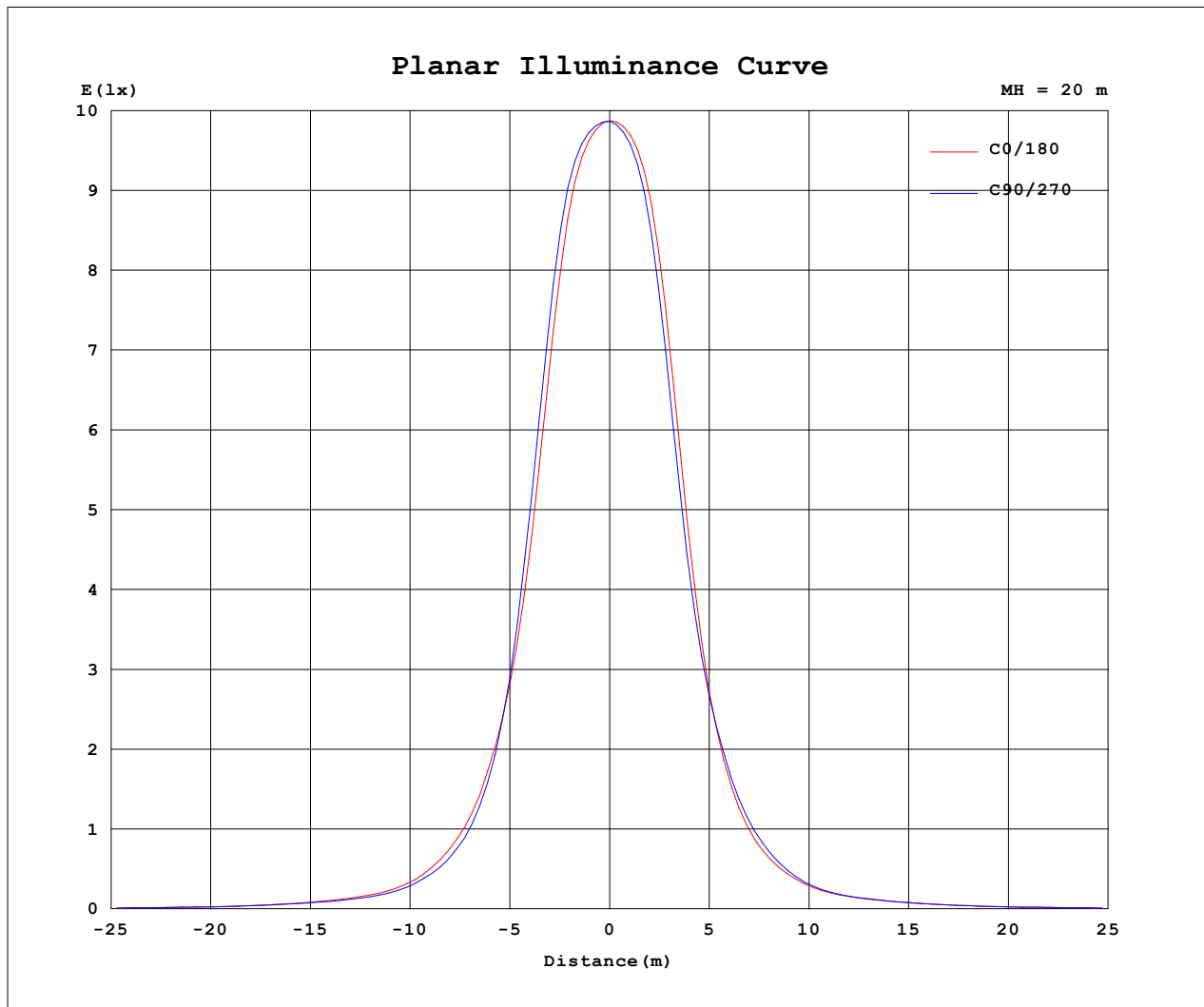
AvgL	cd/m2
L_0~180 (65) av	13618
L_0~180 (75) av	7447
L_0~180 (85) av	5245
L_90~270 (65) av	13629
L_90~270 (75) av	7499
L_90~270 (85) av	5345
L_45 (65) av	13652
L_45 (75) av	7451
L_45 (85) av	5191

Standard: GB/T 29293-2012

C Range: 0 - 360DEG  
 C Interval: For a lens beam angle of 15°  
 Test Speed: HIGH  
 Temperature: 77.54°F  
 Operators: zoe  
 Test Date: 2024-8-15

γ Range: 0 - 180DEG  
 γ Interval: 1.0DEG  
 Test System: EVERFINE GO-SPEX500\_V1 SYSTEM V2.00.461  
 Humidity: 65.0%  
 Test Distance: 124.409" [K=1.0000]  
 Remarks: LAMP: BXRH-30G10T0-G-83 Ra: 90  
 LENS: PM-1084 15R  
 NO DRIVER: 500mA  
 30minutes warm-up

### Planar Illuminance Curve



C Range: 0 - 360DEG  
C Interval: For a lens beam angle of 15°  
Test Speed: HIGH  
Temperature: 77.54°F  
Operators: zoe  
Test Date: 2024-8-15

γ Range: 0 - 180DEG  
γ Interval: 1.0DEG  
Test System: EVERFINE GO-SPEX500\_V1 SYSTEM V2.00.461  
Humidity: 65.0%  
Test Distance: 124.409" [K=1.0000]  
Remarks: LAMP: BXRH-30G10T0-G-83 Ra: 90  
LENS: PM-1084 15R  
NO DRIVER: 500mA  
30minutes warm-up

**LUMINOUS DISTRIBUTION INTENSITY DATA**

Test:U:17.660V I:0.5000A P:8.8300W PF:1.0000 Freq:49.99Hz Lamp Flux:1124.6x1 lm		
NAME: CTL-M-1.5-30K-15-RC-FX-TF-OP	TYPE:	WEIGHT:
SPEC.: 3000K	DIM.:	SERIAL No.: 2408151135
MFR.: MERCURY LIGHTING	SUR.: 0.001256m2	Shielding Angle:

Table--1

UNIT: cd

C (DEG) γ (DEG)	0	30	60	90	120	150	180	210	240	270	300	330						
0	3949	3949	3949	3949	3949	3949	3949	3949	3949	3949	3949	3949						
5	3681	3731	3767	3789	3790	3780	3737	3690	3659	3632	3634	3651						
10	2318	2415	2490	2564	2566	2513	2410	2295	2236	2191	2215	2258						
15	1065	1073	1052	1057	1029	1017	1001	990	1006	1014	1047	1056						
20	493	479	446	430	411	410	421	431	450	471	494	493						
25	237	227	209	206	198	201	204	204	213	220	234	236						
30	124	119	111	109	108	110	110	109	111	115	121	124						
35	79.0	76.9	72.9	71.7	71.0	71.5	72.3	72.8	73.4	74.8	77.4	78.5						
40	51.6	51.5	50.0	49.6	48.9	49.2	49.4	49.6	49.7	49.7	50.5	51.2						
45	33.6	33.9	33.6	33.3	32.8	32.9	33.0	33.1	33.2	32.8	32.8	33.1						
50	25.3	25.1	24.6	24.2	23.6	23.8	24.1	24.4	24.9	24.8	24.8	25.0						
55	17.8	17.6	17.2	16.8	16.2	16.5	16.7	17.1	17.6	17.6	17.4	17.8						
60	12.4	12.2	11.8	11.7	11.6	11.4	11.5	11.8	12.2	12.4	12.5	12.5						
65	7.27	7.37	7.30	7.34	7.30	7.24	7.18	7.20	7.24	7.13	7.14	7.17						
70	3.68	3.78	3.87	3.97	3.99	3.97	3.90	3.79	3.70	3.63	3.60	3.61						
75	2.36	2.43	2.49	2.55	2.55	2.53	2.48	2.41	2.36	2.32	2.31	2.31						
80	1.35	1.38	1.41	1.46	1.45	1.43	1.40	1.35	1.34	1.32	1.31	1.31						
85	0.57	0.58	0.60	0.62	0.60	0.59	0.58	0.55	0.55	0.55	0.54	0.55						
90	0.00	0.00	0.00	0.00	0.00	0.00	0.00	0.00	0.00	0.00	0.00	0.00						
95	0.00	0.00	0.00	0.00	0.00	0.00	0.00	0.00	0.00	0.00	0.00	0.00						
100	0.00	0.00	0.00	0.00	0.00	0.00	0.00	0.00	0.00	0.00	0.00	0.00						
105	0.00	0.00	0.00	0.00	0.00	0.00	0.00	0.00	0.00	0.00	0.00	0.00						
110	0.00	0.00	0.00	0.00	0.00	0.00	0.00	0.00	0.00	0.00	0.00	0.00						
115	0.00	0.00	0.00	0.00	0.00	0.00	0.00	0.00	0.00	0.00	0.00	0.00						
120	0.00	0.00	0.00	0.00	0.00	0.00	0.00	0.00	0.00	0.00	0.00	0.00						
125	0.00	0.00	0.00	0.00	0.00	0.00	0.00	0.00	0.00	0.00	0.00	0.00						
130	0.00	0.00	0.00	0.00	0.00	0.00	0.00	0.00	0.00	0.00	0.00	0.00						
135	0.00	0.00	0.00	0.00	0.00	0.00	0.00	0.00	0.00	0.00	0.00	0.00						
140	0.00	0.00	0.00	0.00	0.00	0.00	0.00	0.00	0.00	0.00	0.00	0.00						
145	0.00	0.00	0.00	0.00	0.00	0.00	0.00	0.00	0.00	0.00	0.00	0.00						
150	0.00	0.00	0.00	0.00	0.00	0.00	0.00	0.00	0.00	0.00	0.00	0.00						
155	0.00	0.00	0.00	0.00	0.00	0.00	0.00	0.00	0.00	0.00	0.00	0.00						
160	0.00	0.00	0.00	0.00	0.00	0.00	0.00	0.00	0.00	0.00	0.00	0.00						
165	0.00	0.00	0.00	0.00	0.00	0.00	0.00	0.00	0.00	0.00	0.00	0.00						
170	0.00	0.00	0.00	0.00	0.00	0.00	0.00	0.00	0.00	0.00	0.00	0.00						
175	0.00	0.00	0.00	0.00	0.00	0.00	0.00	0.00	0.00	0.00	0.00	0.00						
180	0.00	0.00	0.00	0.00	0.00	0.00	0.00	0.00	0.00	0.00	0.00	0.00						

C Range: 0 - 360DEG

C Interval: For a lens beam angle of 15°

Test Speed: HIGH

Temperature: 77.54°F

Operators: zoe

Test Date: 2024-8-15

γ Range: 0 - 180DEG

γ Interval: 1.0DEG

Test System: EVERFINE GO-SPEX500\_V1 SYSTEM V2.00.461

Humidity: 65.0%

Test Distance: 124.409" [K=1.0000]

Remarks: LAMP: BXRH-30G10T0-G-83 Ra: 90

LENS: PM-1084 15R

NO DRIVER: 500mA

30minutes warm-up